



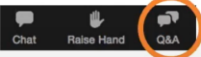



# Appendix 5 Stills from online public consultation event – 4 March 2021

Blandford Hill Webinar

natura

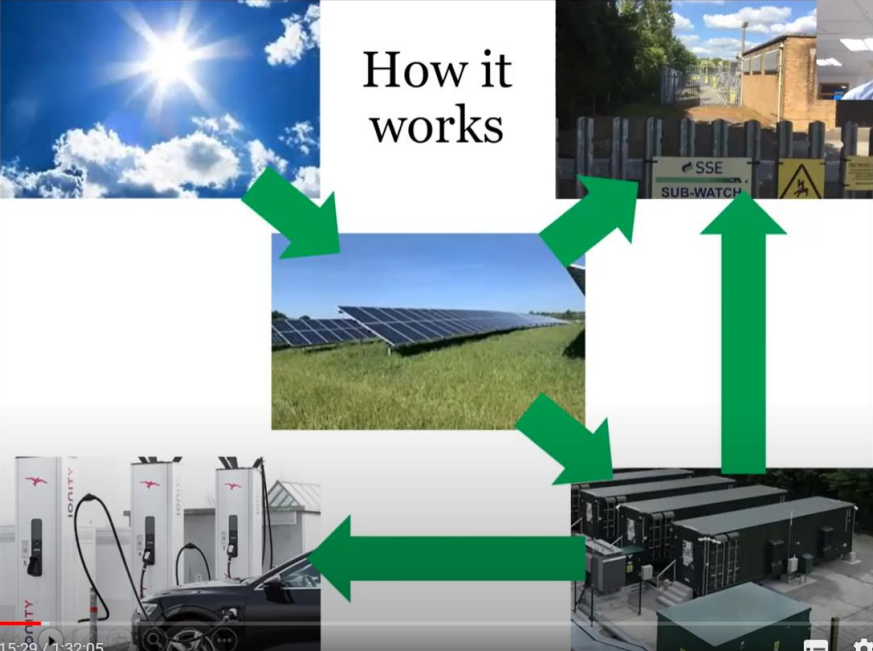
## Today's event

-  **Circa 30-minute presentation** followed by Q&A session
-  Opportunities for **questions and answers**
-  Post-event **FAQs** will be uploaded onto [www.blandfordhillecohub.co.uk](http://www.blandfordhillecohub.co.uk) and are available in hard copy
-  Session will be **recorded** and **uploaded** onto [www.blandfordhillecohub.co.uk](http://www.blandfordhillecohub.co.uk)
-  Ask questions using the **Q&A button** at the bottom of the screen
-  Please provide **feedback** through project website or send the leaflet's response form using Freepost

Chat Raise Hand Q&A

Play (k) 1:04 / 1:32:05 Scroll for details

## How it works



The diagram illustrates the energy flow process. It starts with solar panels (top center) which feed into a battery storage unit (bottom right). From the battery, energy flows to a charging station (bottom left), which then charges a car (bottom left). The diagram also includes a substation (top right) and a sun (top left).

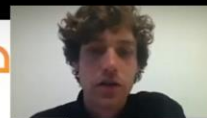
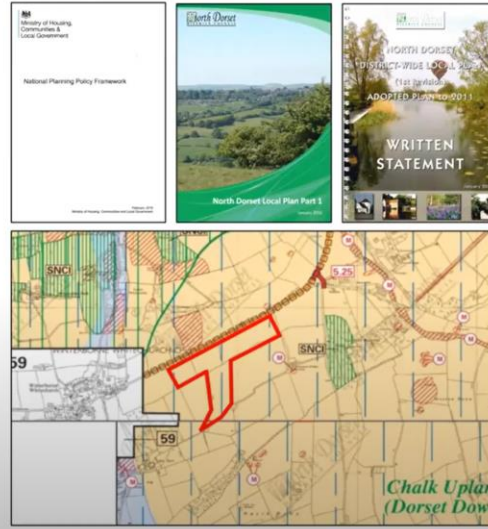
Play (k) 15:29 / 1:32:05

Press Esc to exit full screen



# Planning policy context

- Planning Policy is set out at a National and Local level.
- Generally, Planning Policies are supportive of appropriately sited renewable energy proposals, such as the Blandford Hill Eco Hub scheme.
- A Planning Statement will be submitted as part of the application.
- Pre-application discussions have been held with Dorset Council.



# The site



The site has been identified due to:

- Having a high solar irradiance for the UK

- Adjacent to the A354, a primary road route in England with good access for EV charging
- Being able to increase access to EV charging within the area and ready to meet the demand of rural electric car drivers and those without at home charging facilities

